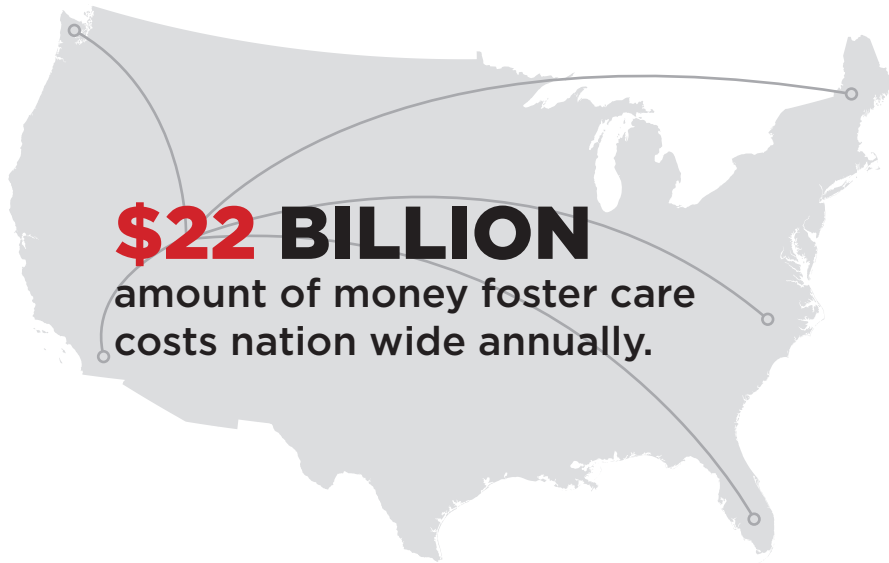


# THE FACTS

# TOUGH LOVE



**30% OF CHILDREN**  
in foster care could be reunited with their parents if they had access to safe, stable, and affordable housing.

**Homeless families are nearly 9x**  
more likely to have their children placed in foster care.

**SUBSTANCE ABUSE IS A FACTOR IN NEARLY 60%**  
of all placements in out-of-home care.

**FOSTER CARE COSTS, on average, \$25,000 per child per year...**

**PREVENTIVE SERVICES**  
could save approximately



**\$16,000 per child, per year.**



**PARENTS IN FAMILY TREATMENT COURTS ARE UP TO 50% MORE**  
likely to be reunified with their families.

**30% to 60%**  
**OF FAMILIES**  
who experience domestic violence also face child welfare issues.

Sources: <http://socialworkers.org/practice/children/2009/sept2009.pdf>; <https://www.childwelfare.gov> (National Data Archive on Child Abuse and Neglect, 2012); <https://www.childwelfare.gov/pubs/factsheets/parentalsubabuse.cfm#1>; <http://abcnews.go.com/Primetime/FosterCare/story?id=2017991>; [http://www.ncsl.org/documents/cyf/strategies\\_reducing\\_the\\_number\\_of\\_children\\_in\\_foster\\_care.pdf](http://www.ncsl.org/documents/cyf/strategies_reducing_the_number_of_children_in_foster_care.pdf); (National Center on Family Homelessness, 2009; U.S. Department of Housing and Urban Development, 2007); [https://www.childwelfare.gov/pubPDFs/domesticviolence2003.pdf#page=12&view=CHAPTER 2 The Overlap Between Child Maltreatment and Domestic Violence](https://www.childwelfare.gov/pubPDFs/domesticviolence2003.pdf#page=12&view=CHAPTER%20The%20Overlap%20Between%20Child%20Maltreatment%20and%20Domestic%20Violence)